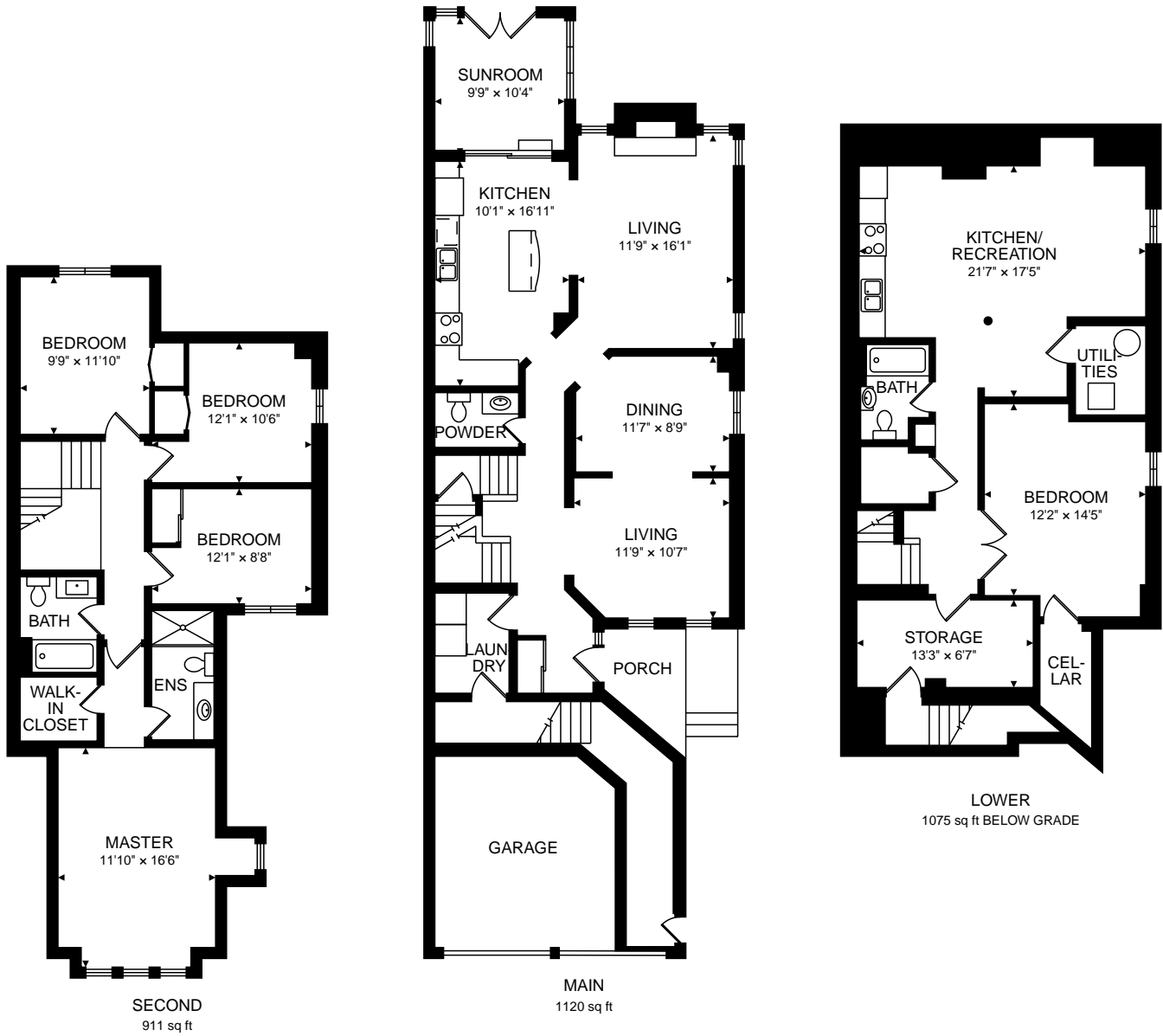


39 SAL CIR  
 BRAMPTON, ON L6R 1H6



TOTAL  
 2031 sq ft + 1075 sq ft BELOW GRADE



CAPTURED ON: 7 OCT 2018  
 DIMENSIONS, AREAS, LAYOUTS AND DETAILS ARE APPROXIMATE  
 AND SHOULD BE CONSIDERED ILLUSTRATIVE ONLY.